



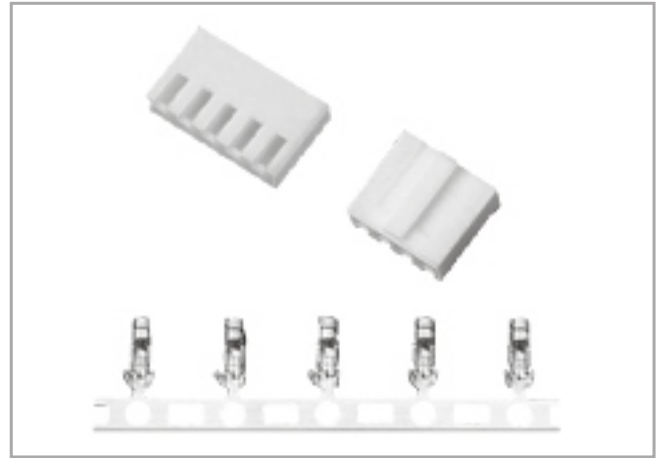
2.5 mm 间距 CS25010 型条形连接器

PRESSURE WELDING BAR CONNECTOR

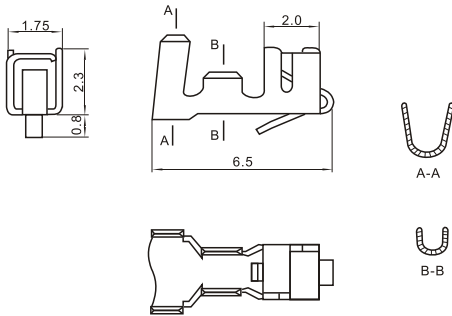
(YH025)

技术参数 SPECIFICATIONS

- > 线数 (Poles) : 2~10
- > 适用线规 (Applicable wires) : AWG28#~22#
- > 温度范围 (Temperature range) : -25℃~+85℃
- > 额定电压 (Voltage rating) : 250V.AC/DC
- > 额定电流 (Current rating) : 3A
- > 接触电阻 (Contact resistance) : $\leq 0.02\Omega$
- > 绝缘电阻 (Insulation resistance) : $\geq 1000M\Omega$
- > 耐压 (Withstand voltage) : 1000V.AC/1分钟 (Minute)
- > 材料 (Material) :
 - 插头 (Housing) : 尼龙 (Nylon) UL94V-0
 - 端子 (Terminal) : 磷青铜 (Phos.bronze Tin/plated)



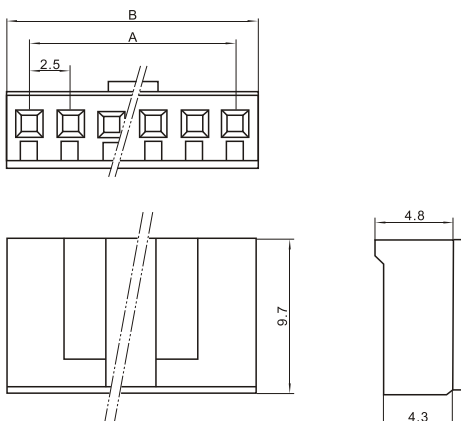
端子 Terminal



端子型号规格 Terminal specification and type

型号 Type	适用线规 Applicable wires		电线外径 O.D of wire ins mm
	mm ²	AWG#	
CS25010-DY-001T	0.08~0.33	28~22	1.2~1.9

插头 Housing



插头型号规格 Housing specification and type

线数 Poles	型号 Type	尺寸 Dimensions(mm)	
		A	B
2	CS25010-2Y	2.5	5.6
3	CS25010-3Y	5.0	8.1
4	CS25010-4Y	7.5	10.6
5	CS25010-5Y	10.0	13.1
6	CS25010-6Y	12.5	15.6
7	CS25010-7Y	15.0	18.1
8	CS25010-8Y	17.5	20.6
9	CS25010-9Y	20.0	23.1
10	CS25010-10Y	22.5	25.6